

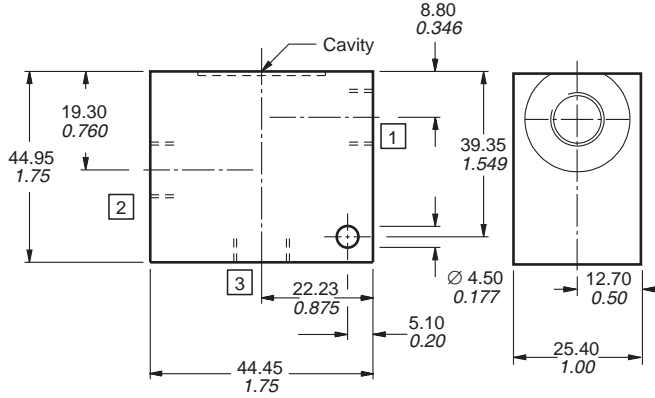


# LINE BODIES

**LB10595/596**  
**LB10501/503/506**  
**LB10521/523/525**

## LB10595/596

## Cavity CAV01-A3, 5/8 - 18 Thread, 3 Port



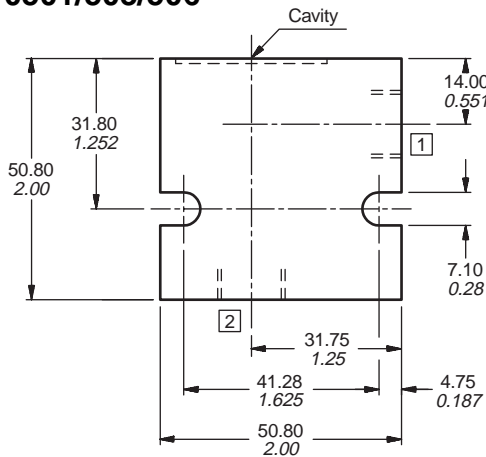
<b>LB10</b>	
-------------	--

CODE	PORT SIZE	
	MAIN	AUX
595	1/4 SAE	-
596	1/4 BSP	-

CODE	MATERIAL
A	ALUMINIUM
S	STEEL

## LB10501/503/506

## Cavity CAV02-2 (8-2), 3/4 - 16 Thread, 2 Port



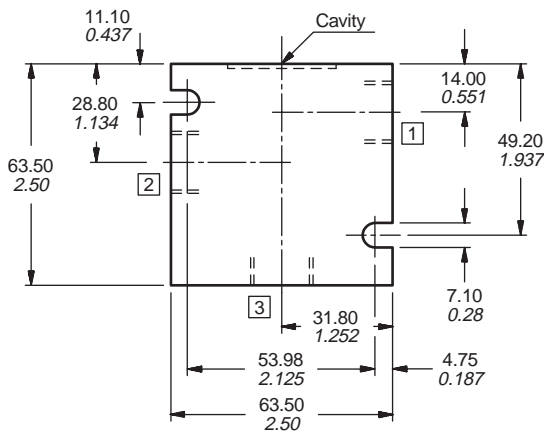
<b>LB10</b>	
-------------	--

CODE	PORT SIZE	
	MAIN	AUX
501	3/8 NPTF	-
503	3/8 SAE	-
506	3/8 BSP	-

CODE	MATERIAL
A	ALUMINIUM
S	STEEL

## LB10521/523/525

## Cavity CAV02-3 (8-3), 3/4 - 16 Thread, 3 Port



<b>LB10</b>	
-------------	--

CODE	PORT SIZE	
	MAIN	AUX
521	3/8 NPTF	-
523	3/8 SAE	-
525	3/8 BSP	-

CODE	MATERIAL
A	ALUMINIUM
S	STEEL

LINE BODY MATERIAL: ALUMINIUM (Anodised) — to 210 bar 3000 psi  
 STEEL (Zinc plated) — to 420 bar 6000 psi

DIMENSIONS: MILLIMETRES INCHES

