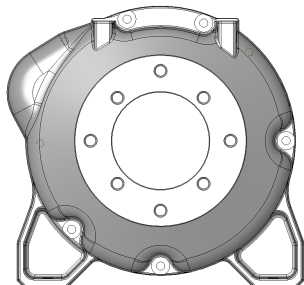
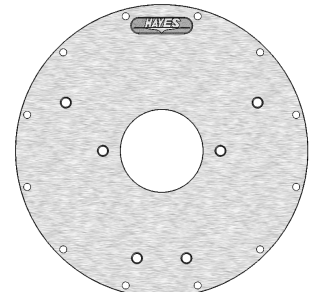
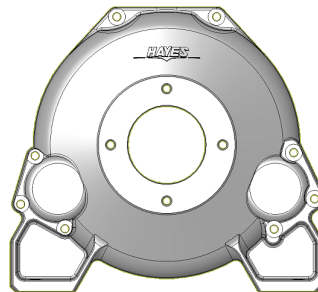
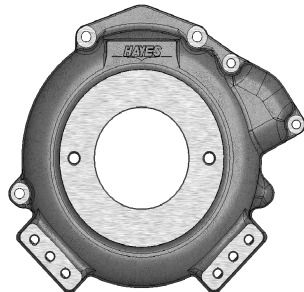
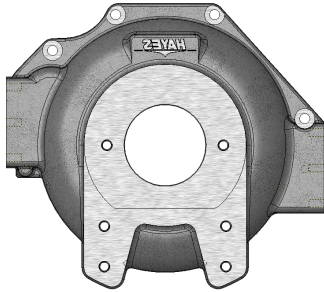




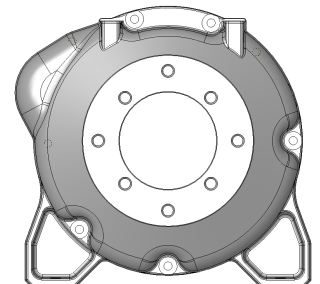
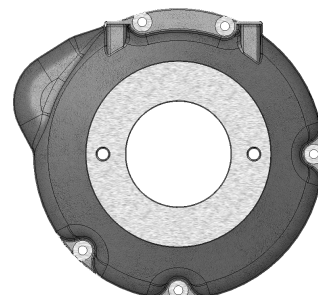
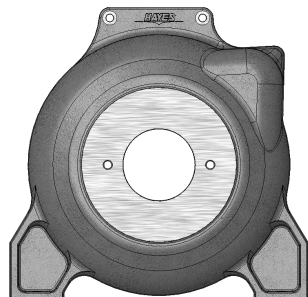
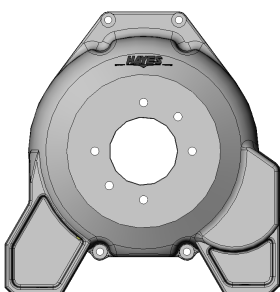
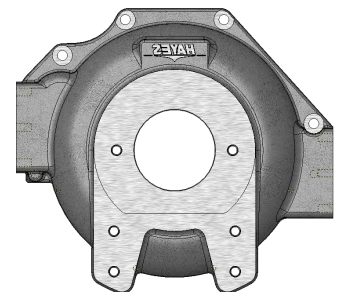
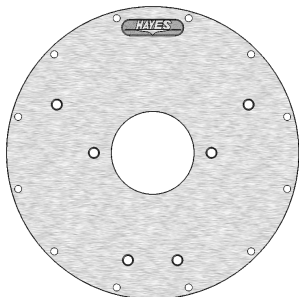
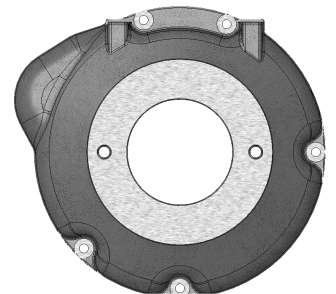
---

## Engine Housings

---



# Aluminum Engine Housings



**Hayes Manufacturing, Inc.**

6875 U.S. 131

Fife Lake, MI 49633

Phone: (231) 879-3372 Fax: (231) 879-4330

Visit us at [www.hayescouplings.com](http://www.hayescouplings.com)



---

## Hayes Aluminum Housings

Today, there are thousands of Hayes aluminum housings in service throughout the world. Together with our “original” Hayes flywheel coupling and our torsionally stiff HEX-FLX flywheel couplings, our aluminum housings tackle tough gas and diesel engine applications.

The housings take up very little space, while supporting a significant amount of weight. They are available with a wide variety of mounts and sensor options, and can be used in conjunction with our bearing supported stub shafts and generator drives.

### Design Characteristics:

#### Sturdy Aluminum Castings

- Heat treated aluminum housings
- Thick walls for extra support and thread engagement

#### Mounts

- Foot mounts
- Side mounts
- Face Mounts
- Top Mounts
- Special pump mount options are always available

### Features and Advantages:

- Sturdy “High-Strength “ aluminum construction
- Custom fit to engine starter plates
- SAE and non-SAE pump mounting
- Standard and special engine mounts
- Custom/personalized housings available upon request
- Thick wall design for heavy pump applications
- Painted housings (available upon request)
- Competitively priced and normally in stock

### Applications:

- Our housings are used on a variety of different diesel and gasoline applications.

**CALL US TO DISCUSS YOUR SPECIFIC APPLICATION REQUIREMENTS**

### **Hayes Manufacturing, Inc.**

6875 U.S. 131

Fife Lake, MI 49633

Phone: (231) 879-3372 Fax: (231) 879-4330

Visit us at [www.hayescouplings.com](http://www.hayescouplings.com)



**Housings Available:**

- Cummins B 3.3
- Cummins A Series
- Cummins 4B/6B
- Deutz Semi SAE #4
- Daihatsu
- Ford VSG-413
- Ford LRG-425
- Ford 2.3L (New in 2006)
- GM 1.6
- GM 3.0
- GM 4.3
- GM 5.7
- Hatz Semi SAE #5
- Hyundai 1.0
- Hyundai 1.6
- Hyundai 2.0
- Hyundai 1.0 SAE (7-1/2 x 5)
- Hyundai 1.6 SAE (7-1/2 x 5)
- Hyundai 2.0 Special
- Isuzu L-Series
- Isuzu 3CD
- Kubota Super Mini
- Kubota Super 05
- Kubota Super 03
- Kubota V3300
- Kubota ZB 600
- Mitsubishi
- Nissan A-15
- Nissan Forklift
- Nissan CG-13
- Nissan H Series SAE #4
- Perkins Semi SAE #3
- Yanmar

**If your housing is not on this list, don't worry! We make new housings every year. Contact Hayes and we'll get started on your new design.**

**Hayes Manufacturing, Inc.**

6875 U.S. 131

Fife Lake, MI 49633

Phone: (231) 879-3372 Fax: (231) 879-4330

Visit us at [www.hayescouplings.com](http://www.hayescouplings.com)